

Perinatal Ultrasound Case Presentation

A Rare Cause of Bicaval Asymmetry

Desiree Becker, RDMS, RDCS, RVT

REFRESHED June 2019

Thomas J. Garite, MD. Director of Research and Education, MEDNAX
National Medical Group.

Ultrasound images courtesy of:

Desiree Becker, RDMS, RDCS, RVT, Nichole Hamilton, RDMS and Joy
Dobrinen, RDMS, RDCS. Seattle Ultrasound. Seattle, WA (USA)



Desiree Becker, RDMS, RDCS, RVT.

Resume:

Desiree Becker, RDMS, RDCS, RVT graduated from Bellevue College diagnostic ultrasound program in 2010. After graduation she worked in a hospital where she specialized in general and vascular sonography. She then went on to work in a maternal-fetal medicine practice where she obtained her RDCS in fetal echocardiography. In 2015 she joined Seattle Ultrasound doing exams ranging from abdomens and gynecology to nuchal translucency and fetal echocardiograms.

Learning Objectives

Following the completion of this educational activity:



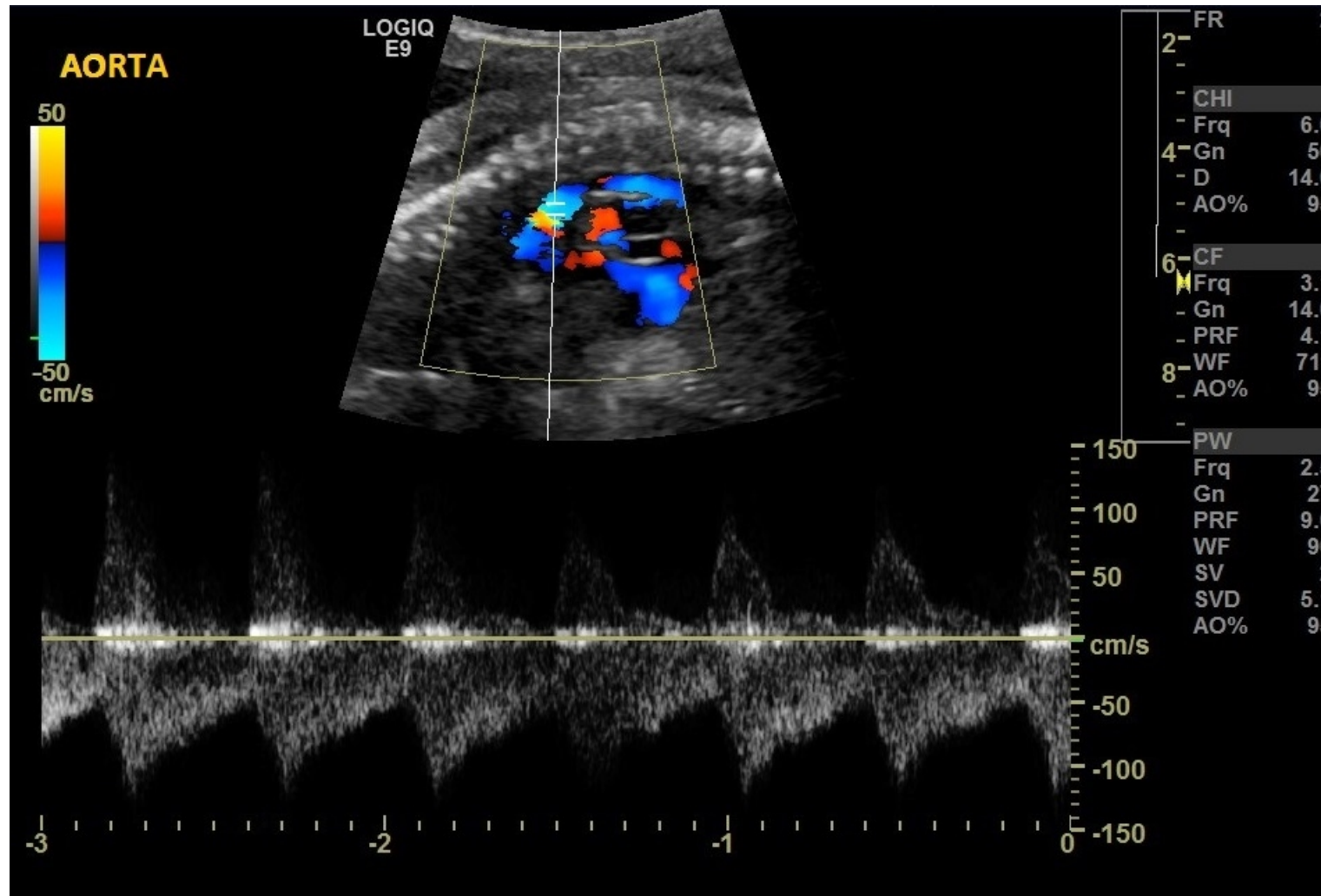
- The learner should be able to describe the sonographic features of the vascular abnormality.
- The learner should be able to identify the associating findings of this vascular abnormality.
- The learner should be able to discuss the prognosis of a vascular abnormality.

Part 1



A 28 year old, gravida 1, para 0 presented to our ultrasound office at 23 weeks gestation for a follow-up anatomy scan. Her detailed exam showed a slightly enlarged Superior vena cava (SVC), with the remainder of the exam appearing normal. The patient had no significant medical or obstetrical history. The follow up scan showed a substantial increase in the diameter of the SVC. The fetal heart was enlarged, the aorta showed a reversal of flow as well as the findings shown in the next slides.

Images 1 – Aorta Reversed



Ultrasound images
courtesy of:

Desiree Becker,
RDMS, RDCS, RVT,
Nichole Hamilton,
RDMS and Joy
Dobrinen, RDMS,
RDCS. Seattle
Ultrasound. Seattle,
WA (USA)

www.mednax.com

Image 2 – Superior Vena Cava (SVC)



**Ultrasound images
courtesy of:**

Desiree Becker,
RDMS, RDCS, RVT,
Nichole Hamilton,
RDMS and Joy
Dobrinen, RDMS,
RDCS. Seattle
Ultrasound. Seattle,
WA (USA)

www.mednax.com

Image 3 – Bicaval View



**Ultrasound images
courtesy of:**

Desiree Becker,
RDMS, RDCS, RVT,
Nichole Hamilton,
RDMS and Joy
Dobrinen, RDMS,
RDCS. Seattle
Ultrasound. Seattle,
WA (USA)

www.mednax.com

Image 4 – Vein



Ultrasound images
courtesy of:

Desiree Becker,
RDMS, RDCS, RVT,
Nichole Hamilton,
RDMS and Joy
Dobrinen, RDMS,
RDCS. Seattle
Ultrasound. Seattle,
WA (USA)

www.mednax.com

Take a moment to reflect on the case and images presented.



1. When faced with this case, consider what your next steps might be. What might your diagnosis be?
1. To read about diagnosis/management/review of literature proceed to Part II by clicking on the “View PDF” link for Part II.
1. Following review of Part II, you will have an opportunity to access a list of references.
1. To earn credit, pass the post-test (70% correct) and complete the evaluation.